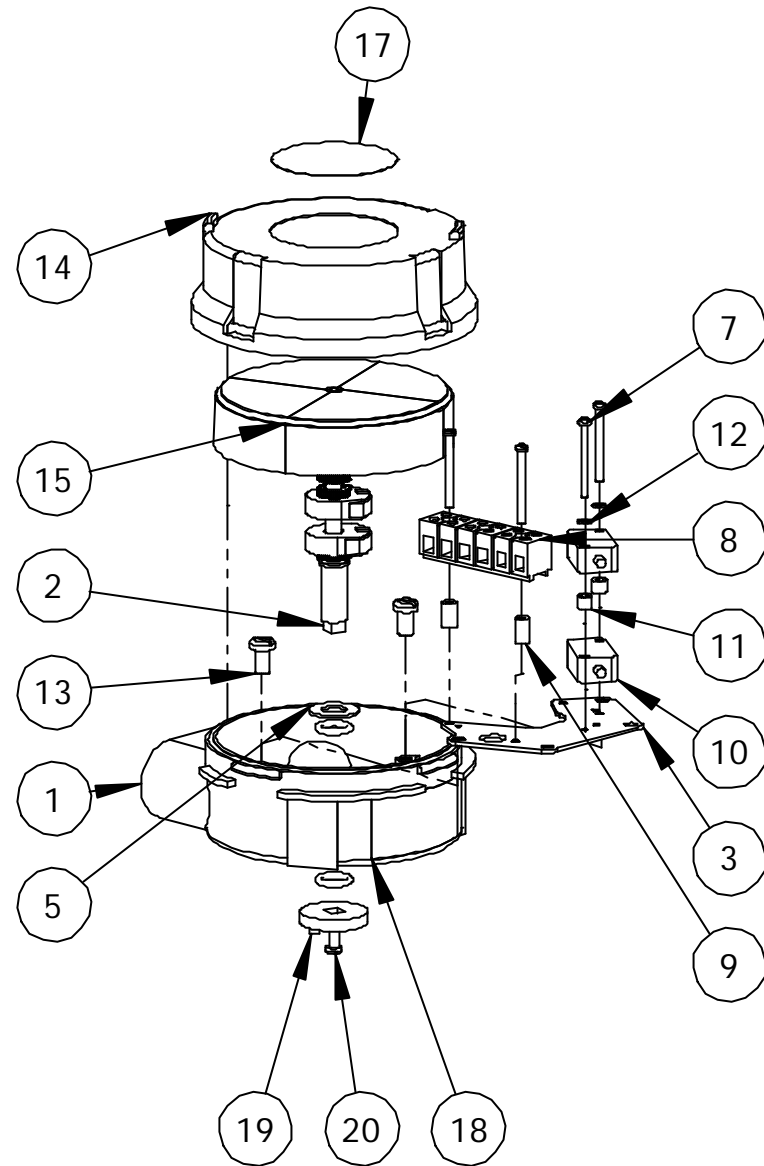
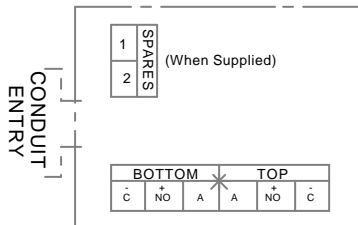


ITEM NO.	PART NUMBER	DESCRIPTION	Explode/ QTY.
1	C100002	SLR Housing - 2 x M20	1
2	C120003	25mm Mechanical Shaft - Prox	1
3	B130001	SLR Switch Plate	1
4	A170003	SLR Housing O-Ring	1
5	A100007	M10 Form Flat Washer	1
6	A170002	O-Ring ID 9.92mm CS 2.62mm	2
7	A100015	M3 x 30 Pan Hd	4
8	A110009	MK3-6 Terminal Block - Blue	1
9	A120001	10mm Terminal Spacer	2
10	A140003	V3 Proximity - NJ2-V3-N	2
11	A120008	5mm Plastic Spacer	2
12	A100019	M3 Lockwasher SS	2
13	A100017	M5 x 10 Pan Head SS	2
14	C110001	SLR Cover Assembly	1
15	C110002	Red-Green SLR Indicator Assembly	1
16	A100003	M4 x 8 Skt Hd SS Screw	1
17	A160105	SLR17 - Top Label-ATEX	1
18	A160116	ATEX - 'W' Label	1
19	403034	S Shaft Adapter	1
20	408546	8-32 Pan Screw - SLR S Shaft	1
21	A100214	M10 Form Flat Washer - for SLR S	1



Wiring - SLR40, 42, 43



REV	DRAWN PT	DATE	CHK'D	ECO
-		23.5.04		

UNLESS OTHERWISE SPECIFIED:
 DIMENSIONS ARE IN MILLIMETERS
 SURFACE FINISH:
 TOLERANCES:
 LINEAR:
 ANGULAR:

TITLE:

SLR w/ 2 x NJ2-V3-N - ATEX

This private & confidential drawing is the property of Imtex Controls Limited, Tonbridge, UK and cannot be copied or reproduced without the express written permission of the Company.

Imtex Controls Limited
 Unit 5A, Valley Industries, Hadlow Road
 Tonbridge, Kent, TN11 0AH, United Kingdom
 Tel: +44(0)1732-850360 Fax: +44(0)1732-852133
 Website: www.imtex-controls.com

DEBUR AND
 BREAK SHARP
 EDGES

MATERIAL:

WEIGHT(g):

DWG NO.

SLR4205SR-WOO

A4

SCALE:1:5

SHEET 1 OF 1