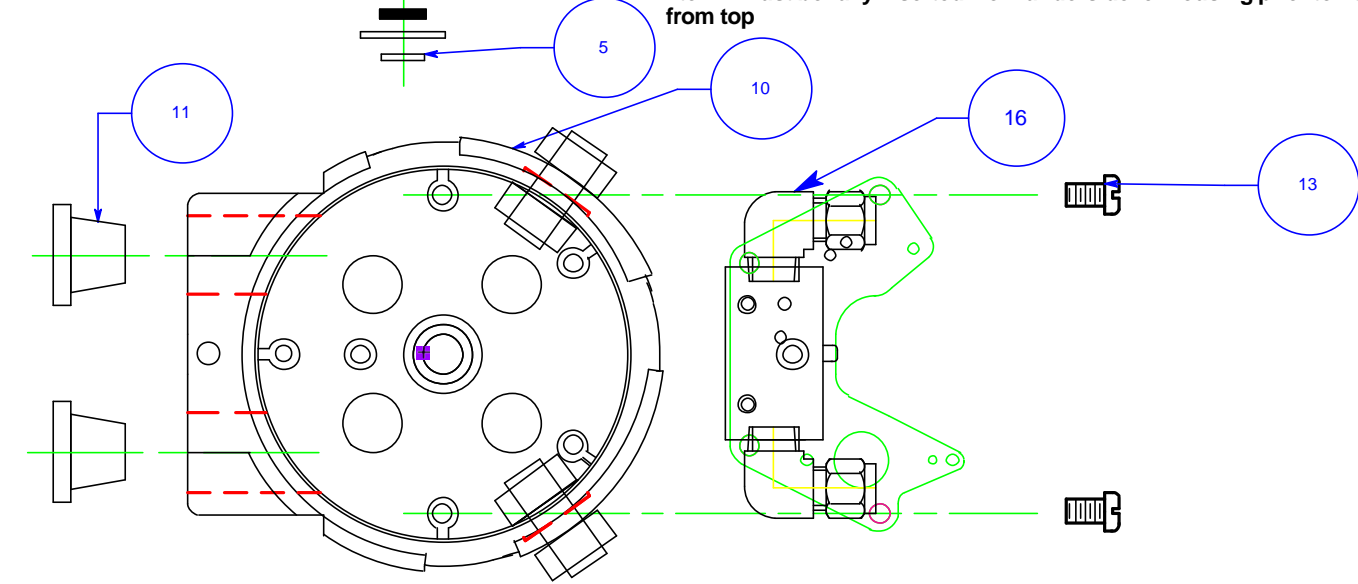
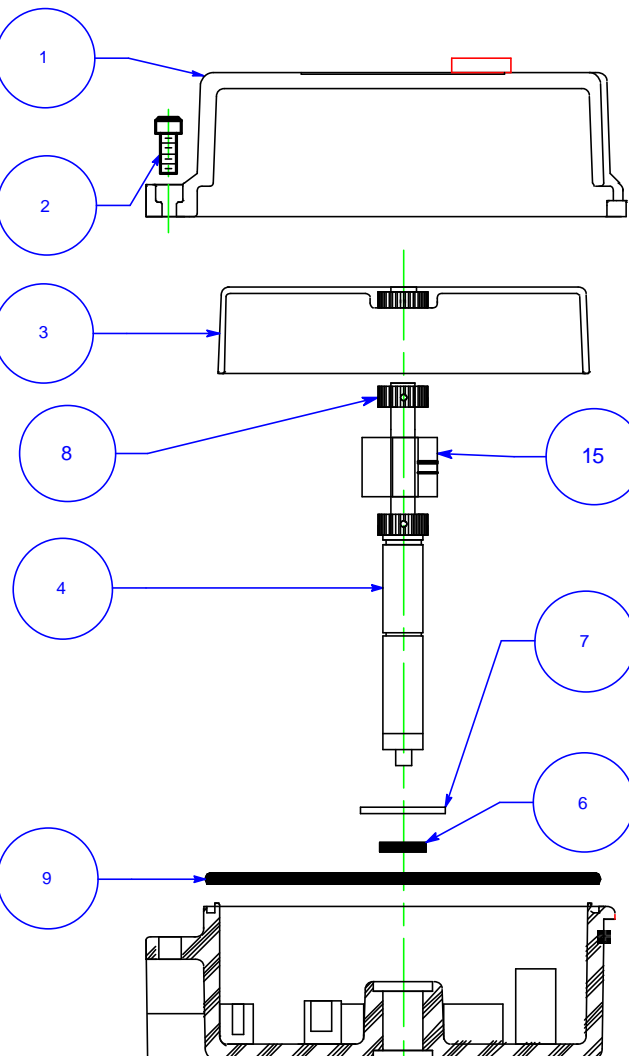


ITEM	Part No.	DESCRIPTION	QUANTITY																	
			SLR1605MR-OCJ	SLR1605LR-OCJ																
01	C110001	COVER ASSEMBLY	1	1																
02	A100003	COVER LOCK SCREW	1	1																
03	C110002	INDICATOR ASSEMBLY	1	1																
04	B120002	MECH. SHAFT ASS.	1																	
04	B120001	MECH. SHAFT ASS.		1																
05	A100008	CIRCLIP	1	1																
06	A170002	SHAFT O-RING	2	2																
07	A100007	FLAT WASHER	2	2																
08	B120004	SPLINE	2	2																
09	A170001	HOUSING O-RING	1	1																
10	C100002	HOUSING ASSEMBLY	1	1																
11	A190018	M20 PLASTIC PLUG	2	2																
12	C130035	MECH. PLATE ASS.	1	1																
13	A100017	PLATE LOCK SCREW	2	2																
14	A190009	BULK HEAD FITTING	2	2																
15	B120015	CAM	1	1																
16		ELBOW FITTING	1	1																



NOTES:
 Label A160011 to be attached to top of cover in recess at end of assembly
 Label A160003 to be attached to inside of housing wall once completed.
 Attach appropriate bracket to underside of unit using 4 x A100009 screw
 Item 2 must be fully inserted from underside of housing prior to fitting from top

CODE	ECO	DATE	BY
REVISIONS			
TOLERANCES (UNLESS NOTED OTHERWISE)			
X.XXX ± .005, X.XX ± .010, FRACTIONS ± 1/64 - XX DIM. IN INCHES.			
[X.XX±.13] , [X.X±.25] , [X±.40] - [XX]DIM. IN MM.			
ANGLES ± 0° - 30' FINISH Å 125 RMS			

intex

MONITORING & CONTROL
 Unit 5A, Valley Industries, Hadlow Road, Tonbridge, Kent,
 TN11 0AH, England Tel: +44(0)1732-850360

SCALE 1:1	DR. PT	CHK.	APPD.	DRAWING NO. SLR1605XR-OCJ	REV.
DATES 4/1/02					