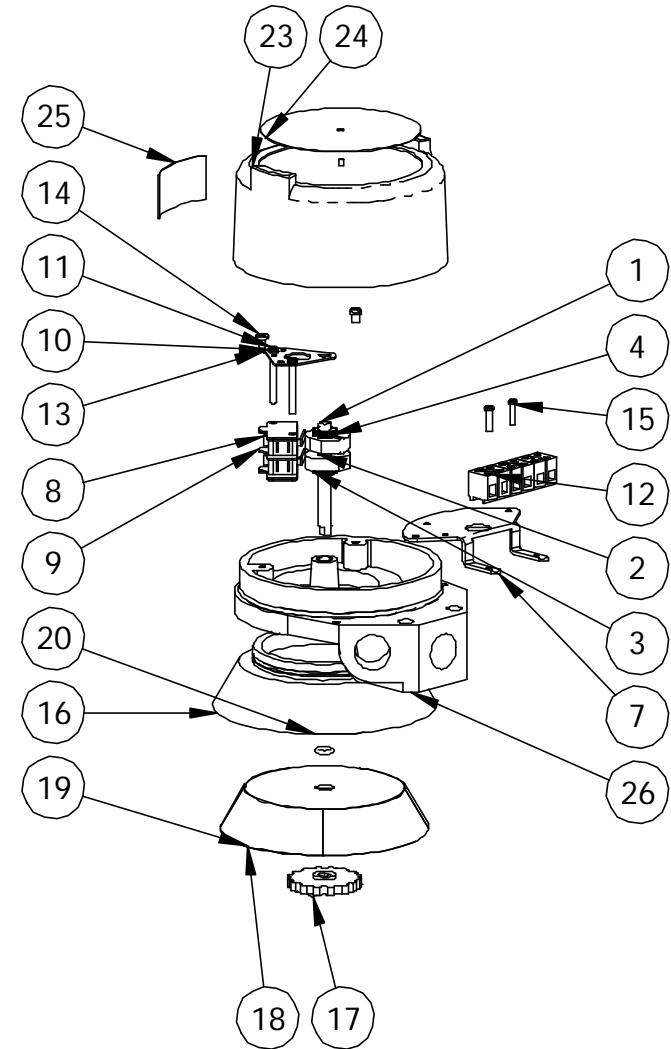


ITEM NO.	PART NUMBER	DESCRIPTION	Default/QTY.
1	B120044	EQ/AQ/IQ Shaft - 2 x Mech	1
2	B120003	Cam	2
3	B120004	Standard Spline	2
4	B120006	Roll Pin	2
5	407001	Housing O-Ring	1
6	407003	Shaft O-Ring	2
7	B130015	V3 Plate	1
8	A140002	V3 Mechanical - Gold Plated	2
9	413001	Switch Insulator	5
10	A100019	M3 Lockwasher SS	2
11	A100015	M3 x 30 Pan Hd	2
12	A110009	MK3-6 Terminal Block - Blue	1
13	411004	Switch Top Plate	1
14	A100098	M4 x 5 Pan Hd SS	2
15	A100164	M3 x 12 Pan Hd Screw	2
16	402039	Outer Indicator	1
17	403045	Drive Piece	1
18	404003	Inner Indicator Drum	1
19	416039	Inner Indicator Label	1
20	416142	Outer Indicator Label	2
21	407004	Indicator O-Ring	1
22	A100096	M4 x 8 Set Screw	1
23	C110102	Small Cover - SS	1
24	A160104	AQ ATEX Sticker	1
25	A160114	ATEX - 'Z' Label	1
26	C100107	M20 Housing - SS	1



REV	DRAWN	DATE	CHK'D	ECO
	PT	25.3.04		
-				

UNLESS OTHERWISE SPECIFIED:
DIMENSIONS ARE IN MILLIMETERS
SURFACE FINISH:
TOLERANCES:
LINEAR:
ANGULAR:

TITLE:
AQ Monitor w/ 2 x V3 GP Mech - ATEX

This private & confidential drawing is the property of Imtex Controls Limited, Tonbridge, UK and cannot be copied or reproduced without the express written permission of the Company.

Imtex Controls Limited
Unit 5A, Valley Industries, Hadlow Road
Tonbridge, Kent, TN11 0AH, United Kingdom
Tel: +44(0)1732-850360 Fax: +44(0)1732-852133
Website: www.imtex-controls.com

DEBUR AND
BREAK SHARP
EDGES

MATERIAL:

WEIGHT(g): 2535.71

DWG NO.

AQ17S5SR-ZOO

A4

SCALE:1:1

SHEET 1 OF 1